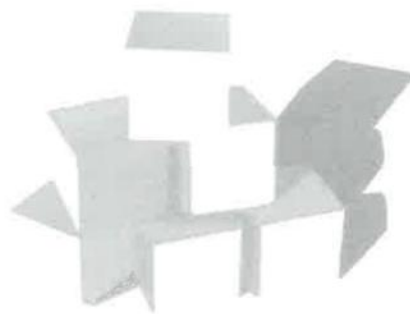
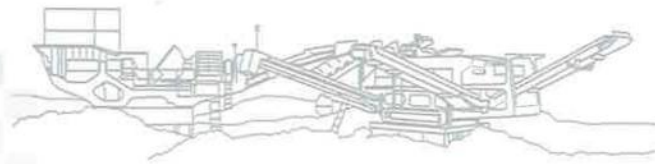


SAEED & KHALIL

FOR CONSTRUCTION MATERIAL & HEAVY EQUIPMENTS



**The building block
of your business.**



Introduction

Saeed & Khalil for Building Maintenance L.L.C. was founded in Dubai, United Arab Emirates in 1980. The founder and Managing Director is Khalil A. Mougharbel & his local partner Saeed Saleh Saeed Al Sawad have ever since strived to provide its customers with excellence in service; as this is what we provide, service at its best. Therefore we make every effort to ensure we are up to date every step of the way from the time our client places their order to the time the material is off-loaded at their site. Throughout the process we insure that we are providing you as well as our drivers the safest, fastest possible way our company can meet your target and goals. Our company's main activities involve the supply of raw building materials all over the United Arab Emirates and Oman as well as leasing heavy equipment on a hire bases at competitive market rates. We also provide services such rubbish removal, excavations of sand and building of tarmac roads as well as laying down interlocking tiles to construct parking lots. Experience is said to be the best teacher and having work experience in this field since 1980 speaks for itself. Over the years we have seen the U.A.E. grow into the metropolis it is today and we make every effort to ensure we are keeping up with our services to insure that it is at the top of its industry.





Our Vision

We aim to be one of the leading rock & aggregate transportation company's in the country by setting high standard performances and measuring results. We constantly strive to improve our customer service procedure and providing quality and cost effective solutions to our clients.

Our Mission

We believe that to enable us to achieve our vision, we must first recognize the most essential ingredient of success and that is by always ensuring to involve and provide our employees of all levels with necessary internal support they need. As well as training to assist them in recognizing the importance of enhancing productivity as well as efficiency and attaining higher quality of products, services. We believe by supporting our staff with these guidelines and the knowhow needed to identify and improve our work process we can achieve our goals accordingly. In turn our objective is to exceed our clients' expectations and assist them in for-filling their end product whatever it may be related to our services.



Our Services

S & K provides a full range of supply services including advice and consultation on construction materials according to our client's needs. As we are very familiar with materials supplied around the region what they are used for and alternative materials that can be used to cut costs. Time and time again we see the client asking for designs related to material where the wrong item is used. By consulting with our company they are able to achieve their goals in a more cost effective way. In these situations we provide free consultation to our clients and give them flexible options from which they may choose from in order for them to meet their targets that may save them time and money.



S & K specializes in providing sand, aggregate & rock mainly for the following Works for material supply:

- Constructing breakwaters
- Construction of sea protection walls
- Boat ramps & slipways
- Marina construction
- Excavation works
- Plastering of buildings
- Vibro foundations & strengthening of earth works
- Road works & bridges
- Earth works & grading works
- Landscaping & decoration





Most rock material that is available for supply in the U.A.E. is either two of the following:

Gabro: This is referred to as a group of dark gray coarse-grained rock. It is intrusive and equivalent to igneous rocks or basalt. It forms when molten magma is trapped beneath the Earth's surface and slowly cools into a holocrystalline mass. It is mostly found in Fujeirah & Ras Al Khaimah. Garbo material is of a very high density (Aproximately 2.2) therefore making it ideal and suitable to support building material supply for most industries in the U.A.E.

Limestone: This is a sedimentary rock composed primarily of calcium carbonate (CaCO_3) in the form of the mineral calcite. It commonly forms in clear, warm, shallow marine waters. It is usually an organic sedimentary rock that forms from the accumulation of shell, coral, algal, and fecal debris. Limestone has an aproximate density of 1.8 and is too is found in areas such as Ras Al Khaimah and Fujeirah.

S & K focuses on providing its clients the following gabro or limestone materials:

Armor & hearing rock: These size rocks are mostly one tone and greater which are mostly used for breakwater and sea protection walls. They are as well used in landscaping and decorative purposes such as waterway falls.

Rip rap rock: Riprap rock is used as building blocks for bridges, pilings and other shoreline structures against scour or water erosion. It is used to protect coastlines and structures from erosion by the sea. This material can range anywhere from 60Kg to 500Kg in most cases.

Natural occurring stones: Of all sizes these curved shape stones in most cases have no sharp edges and are used for constructing natural lakes and waterways, bridge slopes and decorative purposes. These stones are not fed in to the crusher but instead excavated from the earth and fed through a grizzly for size seperation.

Road base: Road base is available most commonly in two sizes which are either 37.5mm-0mm or 50mm-0mm that are used for thickening the range of approximately 100-150mm of the area and is compacting to a minimum of 95%. This is needed to provide a stable and solid foundation to support additional layers that will be placed on top. The end results are either roads, race tracks and pavements.

Aggregates & sand: Aggregate is a broad category of coarse particulate that mostly range from 1mm to 20mm used in construction, including sand, gravel, and crushed stone. Aggregates are the most mined materials in the world. Sand and gravel can be used to make roofing, agricultural works, plastering on buildings, roads, landscape purposes, on driveways or parking lots and also for water filtration.



Commonly ordered material available at crushers & their purpose

- Washed sand 0-5 mm / crushed (Used for plastering of buildings)
- Un-washed sand 0-5 mm / crushed (Used for block works)
- Un-washed sand 2-5 mm / screened un-crushed (Used for the laying of interlocking tiles)
- Road base (Used for the purpose of building roads & compaction purpose needs)
- Sub base (Used for the purpose of building roads & compaction purpose needs)
- Aggregates 5-10 mm / crushed (Used for decoration & landscaping purposes)
- Aggregates 10-20 mm / crushed (Used for decoration & landscaping purposes)
- Stone 1-3 or 4 inch / crushed (Used for vibro foundation purposes & landscaping)
- Rock 4-8 inch / crushed (Used for soak-way purposes)
- Crushed Rock 60-300Kg (Used against water erosion and shore line structures)
- Rock 1-500 kg (Used for break waters, sea protection walls & landscaping purposes)
- Quarry run 1-1000Kg (used for break waters, sea protection walls & landscaping purposes)
- Underlayer 500-1000 (Used for break waters, sea protection walls & landscaping purposes)
- Armor Rock 1-6 ton (Used for break waters, sea protection walls & landscaping purposes)



In case material you request is not in the above mentioned list we also provide selected materials on demand depending on the quantity of the order.



Project Achievements

These are various previous projects that we have worked on and the contracting companies to whom we had supplied. For your reference we are engaged in several projects in the country under which we supply and deliver different types of material to our well-known and distinctive clients. All of the projects that we are engaged in listed below are transported mainly sand, aggregates and rocks using our fleet of trucks.



Palm Island I & II - Archirodon construction & Taisei Coperation
 Dubai Waterfront - Soletanche Bachy
 Dubai Parks - Arco Contracting
 Akoya - Arco Contracting
 Emirates Hills - Emaar & HLG
 Arabian Ranches - Emaar
 Dubai Autodrome race track - Al Futtaim Carillion
 Dubai Marina - Foundation Equipment Specialists
 Emirates Towers - Besix Contracting
 Burj Khalifa - Al Futtaim Carillion
 Burj Al Arab - NASA Multiplex
 Cammel Race Track Dubai - Arabtec Construction
 Ghantoot Polo Club - GMT Construction
 Jumeirah Beach Residence - Arabtec Construction
 Dubai Marina - ABC Contracting
 Dubai Airport Expansion Project - HLG
 Dubai Festival City - Dutco B. Beauty
 China Town - Zoom General Contracting
 International City - GMT Construction
 Airport Extension terminal III - Al Nabooda
 Lego Land - Arco Contracting
 Motion Gate - Arco Contracting
 Naril Island - NSCC
 Theme Park Yas Island - Arco Contracting
 Sadiat Island - Ghantoot Contracting
 Nuri Island - NSCC
 Ferrari World - Eco Coast
 Ajman City Center - NSCC
 Police Headquarters Al Qusais - Dutco B. Beauty
 DIFC Development - HLG
 Road Works for RTA (Deria) - Over Seas AST
 Fairmont Ajman - Merit International
 Dibba Break Water Project - Darwish Engineering
 Hamriya Free Zone Sharjah Development - Best Choice
 Abu Dhabi Corniche Development - Ghantoot Contracting
 Al Raha Beach Development - National Wheel J&P
 DJ-510 Access Hamriya Sharjah - Darwish Engineering
 Oman Sohar IWP - Keller
 Oman IPP 3 Grid Station - Keller
 Omar Sohar Flour Mill - Keller
 The World Island - Taisei Corporation



Health & Safety:

Since 1980 we have had zero fatalities and continue to carry our procedures to help insure this does not occur in the future.

- Adopt a behavioral approach to the management of safety and health
- Seek to eliminate at-risk behavior and dangerous occurrences
- Achieve and maintain conditions of work, which are healthy and safe
- Provide adequate welfare facilities for our employees
- Carry out regular health screening of employees
- Provide effective instruction, training and supervision
- Ensure that persons employed are both physically and mentally fit and competent for their duties
- Ensure that all employees are fully aware of their responsibilities regarding safety, health and welfare
- Identify hazards and assess risks and eliminate where practicable
- Provide safety equipment such as helmets, proper heavy duty boots and construction vests
- Continuously review and revise company policy and guidance notes
- Provide adequate numbers of competent persons to advise on all aspects of safety, health and welfare
- Allocate adequate resources to fulfil this policy
- Meeting our client's needs with regards to meeting the health & safety measures of their site
- Ensure that appropriate protective equipment is used reducing the risks of injury at all times



Supply of Heavy Equipment

Excavators:

A Mechanical shovel capable of excavating, shifting core material on site.



Dozers & Bobcats:

A powerful tractor with a broad upright blade at the front for clearing ground or shifting material on site.

Cranes:

A large, tall contraption used for moving heavy objects, typically by suspending them from a projecting arm or beam. Useful on building sites.

Six Wheel Trucks:

Capable of a 20 cubic meter capacity usually used in small to medium size sites for shifting material and waste of sorts.

Heavy Trailers:

Varying from 35-45 cubic meter capacity and more likely to be used on larger sites as they can load more but are less maneuverable having the same purpose of perhaps shifting material or disposing of waste on site.

Why use our company?

S & K has a long running success in working with major companies across the UAE & Oman who trust us to deliver the best services at all times. S & K is committed to maintain an excellent business relationship with its clients by making their requirements our priority and providing optimum services at all times.

Due to the fact that our company has been dealing on an on-going process with crushers, transportation and heavy equipment since 1980 we are able to provide your company with rock bottom market prices for various services, and guaranteed delivery at the chosen site location. These transactions are provided by us on a credit basis, which will save you time and money (S & K provides a payment on a credit basis agreed upon with the client) in the sense that you will not have to go through the lengthy process of the following:

- Finding which crushers, transportation and heavy equipment companies will quote you with the best rates, which are mostly located in the mountainous areas of Fujairah, Ras Al Khaimah and Hatta. It can also be a hassle trying to find their location and whereabouts and is also to some extent time consuming.
- Other problems you may come across is the rate itself. If you are new in the market, have not been established in the field for long, and do not require large quantities of material; transportation and heavy equipment companies will be pushing up the rate due to your limited order required. Material and transport provided by crushers are most commonly made on a cash basis therefore money should be paid up front for placing an order.
- More complex transactions such as wanting to transfer material from the crusher site to your site location can also be complicated.



- Transporting the materials from the crusher site to yours will be a problem if the crusher cannot provide you with transportation.
- Then there is the obligation of your company being forced to seek out the most ideal transportation company for your project at hand and the lowest price may not always be the best choice as many times transportation companies do not make their delivery deadlines on time. To add to your problems the quality of material you have requested maybe other than you expected and of lower quality; or on the other hand may not be available. It is however our job to make it available and of the correct quality.



By using our company

We will be able to provide you with affordable prices, you will not have to involve yourself in any of these transactions which means you are saving time and money. At the same time your company will be kept up to date on a first hand basis of production and daily operations. Due to the fact that our company works with supply of these products all the time and that we are daily ordering in large quantities of material we are able to obtain unbeatable prices.



Deadlines are never a problem for us. Once a deadline is set and the terms are made the process is executed immediately.

For us, customer service is of the utmost importance in creating a customer relationship for future prospects. Therefore pleasing you is our first and last priority.



What have you now benefited from through using our company?

- Obtaining the best market prices.
- Providing advice and counseling in helping you choose the exact customized material for your project at hand.
- Leaving procedures and complications from A-Z up to S & K to handle, and at the same time being kept on a first hand basis of daily procedures.
- The inclination of your flexibility by keeping your cash on hand and not having to pay for any of your expenses until an agreed upon date.
- Time is money and this is what we are selling. Time and money.



Given S & K's long standing in the market

We have built an extensive record of success through-out the decades and major institutions across the country. We are committed to keeping an excellent relationship with our clients making their needs our priority and extending them our best services at all times. We are renowned for our reputation for providing competitive prices, guaranteed deliveries and the following services:

- Supplying material of all sizes according to our clients required specifications at the most competitive rates.
- Providing heavy equipment to construction sites.
- Ensuring quality control on the material we are providing.
- Offering services within the clients time frame.
- Arranging and managing the logistics of transportation to construction sites all over the UAE and Oman.

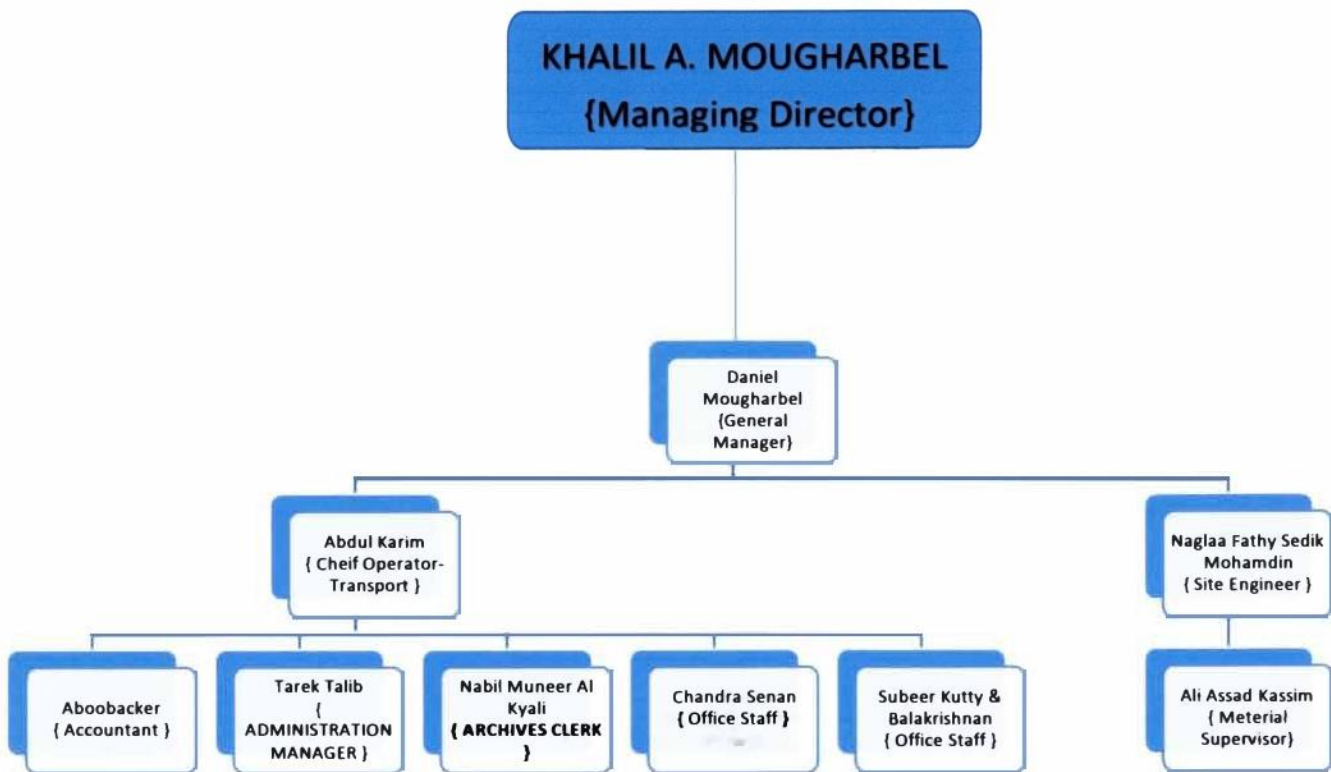
Our Values:

- Client requirements driven and solutions orientated.
- Offering market competitive rates.
- Quality, excellence and value for money.
- Loyalty and long term business relationships with our clients.
- Work ethic, value added work and constant improvement to better ourselves as a company.





SAEED & KHALIL BUILDING MAINTENANCE.LLC
 COMPANY STRUCTURE / ORANOGRAM





رخصة تجارية
Commercial License

تفاصيل الرخصة / License Details

License No.	228401	رقم الرخصة
Company Name	SAEED & KHALIL BUILDING MAINTENANCE L.L.C	اسم الشركة سعيد و خليل لصيانة المباني ش.ذ.م.م
Trade Name	SAEED & KHALIL BUILDING MAINTENANCE L.L.C	الإسم التجاري سعيد و خليل لصيانة المباني ش.ذ.م.م
Legal Type	Limited Liability Company(LLC)	الشكل القانوني ذات مسؤولية محدودة
Expiry Date	17/06/2019	تاريخ الإصدار 18/06/1980
D&B D-U-N-S ® N	561343489	رقم الرخصة الام 228401
Register No.	43418	عضوية الغرفة 25871
	تاريخ الإنتهاء	Issue Date
	الرقم العالمي	Main License No
	رقم المسجل التجاري	DCCI No.

الإطراف / License Members

Share / الحصص	Role / الصفة	Nationality / الجنسية	Name / الإسم	No./ رقم الشخص
	Manager / مدير	Lebanon / لبنان	KHALIL ABDUL RAHMAN EL MOUGHARBEL / خليل عبدالرحمن المغربي	5874

نشاط الرخصة التجارية / License Activities

Building Maintenance	صيانة المباني
----------------------	---------------

العنوان / Address

Phone No	971-4-3981453	تليفون	P.O. Box	12334	صندوق بريد
Fax No	971-4-3981271	فاكس	Parcel ID	0	رقم القطعة
Mobile No	971-50-4527136	هاتف متحرك	شقة رقم 103 ملك حكومة دبي دائرة العقارات بواسطة الشيخ مكتوم بن راشد - بر دبي		

الملاحظات / Remarks

Print Date 21/06/2018 14:13 تاريخ الطباعة Receipt No. رقم الإيصال

Activity Owners

الجهات التي لها صلاحية متابعة أنشطة الرخصة

يمكنك الآن تجديد رخصتك التجارية من خلال الرسائل النصية للتصيرة، أرسل رقم الرخصة إلى 6969 (دو/اتصالات) للحصول على ائتم الدفع.

Now you can renew your trade license by sending a text message (SMS). Send your trade license number to 6969 (Du/ Etisalat) to receive payment voucher.

وثيقة إلكترونية معتمدة وصادرة بدون توقيع من دائرة التنمية الاقتصادية. لمراجعة صحة البيانات الواردة في الرخصة برجاء زيارة الموقع www.dubaided.gov.ae

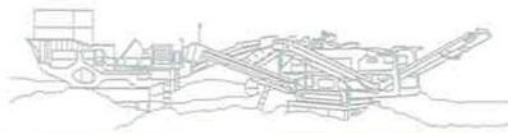
Approved electronic document issued without signature by the Department of Economic Development. To verify the license kindly visit www.dubaided.gov.ae



SK

SAEED  & KHALIL

FOR CONSTRUCTION MATERIAL & HEAVY EQUIPMENTS



Tel: +971 4 3981453
Fax: +971 4 3981271
www.sandk-contracting.com